

# **Vylon<sup>®</sup> PVC Slipliner Pipe**

**21" – 54" Diameters**

*Cost Effective and Proven Performance  
for Live Flow Sewer Rehabilitation*



**Vylon<sup>®</sup> Pipe**

Vylon Pipe is a high capacity, closed profile, large diameter PVC pipe for sanitary sewer systems. The smooth interior and exterior walls with an I-beam inner profile allows the manufacturing of a superior pipe in 21" – 54" diameters. The first installation of Vylon Pipe in a direct bury application occurred in 1987, and Vylon is now offered in both a PS 75 and a PS 46 pipe stiffness for direct bury applications.

## **A Long History of Performance**

Our focus on the development of products for sanitary sewers led to the introduction of Vylon® Slipliner pipe in 1992. Vylon Slipliner pipe can be installed on a live sewer, preventing the cost of by-pass pumping and resulting in a new pipe, not just a liner, inside the existing host pipe.



## **Our Deteriorating Infrastructure Requires Innovative Solutions**

Concrete, ductile iron and clay pipelines have long served the major cities and sewer systems in North America. Like any other aging structure, they become increasingly liable to failure and, because they are out of sight, the problems associated with their aging can go unnoticed. Sometimes these systems fail without warning. This can result in service disruptions and significant emergency repair costs.



To prevent such events from taking place, more and more cities are beginning to specify the use of trenchless technology techniques for the installation, repair and rehabilitation of their failing underground infrastructures. Vylon Slipliner pipe answers the need for a cost-effective piping system that is easy to install, and which has over 30 years of proven performance.



## Features & Benefits

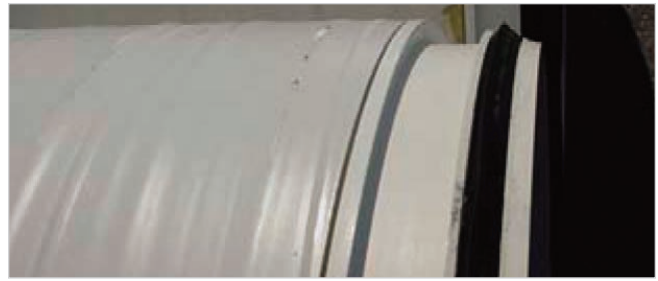
Vylon Slipliner pipe is equipped with many outstanding features that assure long term system performance and low maintenance costs.

### 1. Structural Strength

The PVC in Vylon Slipliner pipe conforms to cell class 12364 as defined by ASTM D-1784. This high modulus material gives Vylon Slipliner pipe the toughness necessary for installation in trenchless technology applications. Vylon Slipliner pipe combines this high modulus compound with an I-beam profile to provide a pipe stiffness of 46 psi which meets all the requirements of ASTM F-1803. It is not just a lining; it is a whole new pipe going inside the existing, and deteriorated, host pipe.

### 2. Easy Installation

Vylon Slipliner pipe can be quickly installed into existing pipes while they are in operation: there is no need for by-pass pumping and the associated high cost. This minimizes interference with existing utilities, environment, traffic, or congested living and working areas and provides greater construction productivity.



### 3. Joint Integrity

The most advantageous characteristic of this innovative slipliner pipe is its unique gasketed joint system. This system provides a tight seal that meets the requirements of ASTM D-3212, the same standard required for all thermoplastic gravity flow sewer pipe. In addition, the innovative flush coupling design allows for easy passage inside the host pipe.



### 4. Superior Hydraulics

Vylon Slipliner pipe has a Manning “n” coefficient of 0.009. This low value will often allow a sliplined pipe to carry as much, and probably more, flow than the existing pipe, particularly if you consider the deteriorated condition of the existing host pipe. Contact Vylon for a flow comparison.

## Evaluation

Although sliplining offers significant benefits, it is not the right technology for all conditions. The success of an installation is based on proper evaluation of the existing pipeline. This can be accomplished by televised inspection or physical inspection, if it is safe to perform such an inspection. Key items to observe are badly displaced joints, roundness, intruding laterals, curvilinear areas, straightness through manholes and reductions in pipe internal diameters.

Badly displaced joints, curved sections, or significantly deteriorated pipe sections that cannot be sliplined, however, are excellent locations for insertion pits or point repairs. In addition, Vylon Slipliner pipe is available in shorter lengths for navigating turns in the line. Refer to the ***Vylon Slipliner Pipe Installation Guide*** for complete information on the proper evaluation, preparation and installation requirements for sliplining.



### ***The Best Choice For Sanitary Sewer Rehabilitation***

**Vylon Slipliner Pipe**, with its structural design, ease of installation in live flow conditions, and high performance joint, is simply your best choice to rehabilitate your existing sewers under the right conditions.

For more information on Vylon Slipliner pipe, contact your local Vylon Pipe sales representative for order and pricing information, or visit our website at [www.vylonpipe.com](http://www.vylonpipe.com)